



10.1 Inch Model Size 1024x600 TFT LCD 40pin LVDS LED Backlight 235x143x3.5mm Outline Dimension

Our Product Introduction

for more products please visit us on tft-displaylcd.com

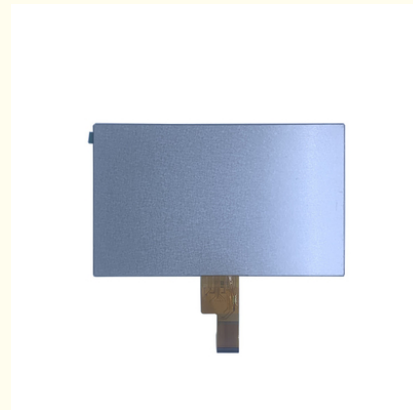
Basic Information

- Place of Origin: China
- Brand Name: OEM
- Certification: ROHS
- Model Number: ZH101IK30035
- Minimum Order Quantity: 1 pieces
- Price: Negotiated
- Packaging Details: Carton Packing
- Delivery Time: 7-15 working days
- Payment Terms: T/T
- Supply Ability: 300k per month



Product Specification

- Luminance: 350 Cd/m²
- Storage Temp: -30 ~ +80
- Display Mode: IPS / Transmissive / Normally Black
- Backlight Technology: LED
- Resolution: 1024x600
- Operating Temp: -20 ~ +70
- Material: Glass
- Model Size: 10.1 Inch
- Highlight: 40pin TFT LCD, 1024x600 TFT LCD, 10.1 Inch TFT LCD



Product Description

Product Description:

This IPS LCD Display is equipped with a 40pin LVDS interface, making it easy to connect to a variety of devices. The display's operating temperature range of -20 to +70 ensures that it can be used in a variety of environments. The display's glass material provides durability and long-lasting use.

Whether you are looking to replace a broken tablet display or upgrade to a larger and clearer display, our 10.1 inch IPS LCD Display is the perfect choice. With its LED backlight technology, 40pin LVDS interface, and wide operating temperature range, this display is versatile and reliable. The display's glass material also ensures that it can withstand daily wear and tear.

Technical Parameters:

Backlight Technology	LED
Display Mode	IPS / Transmissive / Normally Black
Tft Interface	40pin LVDS interface
Model Size	10.1 Inch
Lcd Active Area	222.72(W) × 125.28(H) Mm
Material	Glass
Operating Temp	-20 ~ +70
Storage Temp	-30 ~ +80
Outline Dimension	235×143×3.5mm
Resolution	1024x600

Applications:

The OEM ZH101IK30035 IPS LCD Display is a versatile product that can be used in a variety of applications. The display's high resolution of 1024x600 and 235x143x3.5mm outline dimension make it perfect for a range of display applications that require clear and vivid image quality. This display is made in China and is certified with ROHS compliance, ensuring it meets the highest standards of quality and safety.

The IPS panel technology of this display ensures that colors appear true to life and black is deep, creating a visually stunning image. This makes it ideal for use in retail displays, digital signage, and advertising screens, where vibrant colors and eye-catching displays are essential. Additionally, the 40pin LVDS interface of this display means it can connect to a variety of devices, including computers, media players, and other display devices.

The operating temperature of this display ranges from -20 to +70, making it suitable for use in a wide range of environments. The storage temperature of -30 to +80 means that this display can be safely stored in harsh conditions, ensuring it is ready for use when needed.

The minimum order quantity for this product is 1 piece, and the price is negotiable. The packaging details include carton packing, and the delivery time is 7-15 working days. Payment terms for this display are T/T, and the supply ability is 300k per month.

Overall, the OEM ZH101IK30035 IPS LCD Display is a top-of-the-line product that is perfect for a range of applications. Whether you need a display for retail, advertising, or other applications, this display is sure to deliver crisp, clear images that will impress your audience.

FAQ:

Q1: What is the brand name of this IPS LCD Display?

A1: The brand name of this IPS LCD Display is OEM.

Q2: What is the model number of this IPS LCD Display?

A2: The model number of this IPS LCD Display is ZH101IK30035.

Q3: Where is this IPS LCD Display manufactured?

A3: This IPS LCD Display is manufactured in China.

Q4: Is this IPS LCD Display certified?

A4: Yes, this IPS LCD Display is certified with ROHS.

Q5: What is the minimum order quantity for this IPS LCD Display?

A5: The minimum order quantity for this IPS LCD Display is 1 piece.

Q6: What is the price of this IPS LCD Display?

A6: The price of this IPS LCD Display is negotiated.

Q7: What are the packaging details for this IPS LCD Display?

A7: The packaging details for this IPS LCD Display is carton packing.

Q8: What is the delivery time for this IPS LCD Display?

A8: The delivery time for this IPS LCD Display is 7-15 working days.

Q9: What are the payment terms for this IPS LCD Display?

A9: The payment terms for this IPS LCD Display is T/T.

Q10: What is the supply ability for this IPS LCD Display?

A10: The supply ability for this IPS LCD Display is 300k per month.



Shenzhen Zhuohong Electronic Technology Co., Ltd.



13728899479



alice@zhuohongelectric.com



tft-displaylcd.com

Room 405, No. 1319-9, GuanGuang Road, XinLan Community, GuanLanStreet, LongHua District, 518110
ShenZhen China