



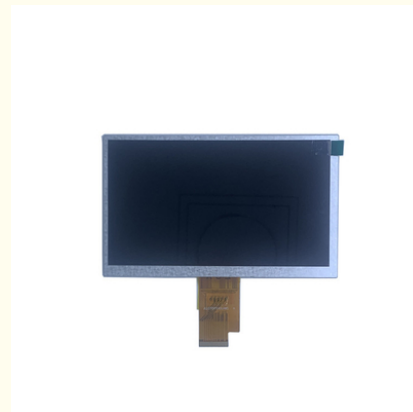
10.1 Inch TFT LCD Display Factory With Active Area 154.08mm×85.92mm And Ultra Quick Response Time Of 5ms

Our Product Introduction

for more products please visit us on tft-displaylcd.com

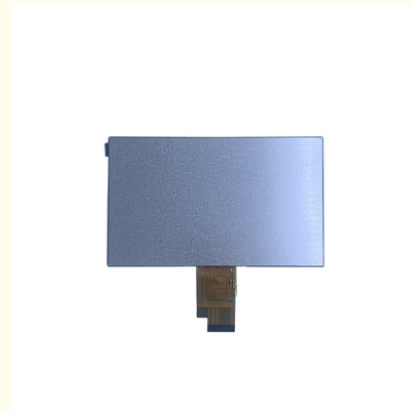
Basic Information

- Place of Origin: China
- Brand Name: OEM
- Certification: ROHS
- Model Number: ZH070IK40035
- Minimum Order Quantity: 1 pieces
- Price: Negotiated
- Packaging Details: Carton Packing
- Delivery Time: 7-15 working days
- Payment Terms: T/T
- Supply Ability: 300k per month



Product Specification

- Active Area: 154.08mm×85.92mm
- Display Colors: 16.7M
- Outline Dim: 165mm*100mm*3.5mm
- Resolution: 1024x600
- Color Depth: 262K
- Backlight Luminance: 500 Cd/m2
- Size: 7 Inch
- Response Time: 5ms
- Highlight: 10.1 Inch TFT LCD Display ,
TFT LCD Display Factory , 5ms TFT LCD Display



Product Description

Product Description:

The active area of the display measures 154.08mm by 85.92mm, providing ample space to display images and text. The display has a fast response time of just 5ms, which makes it ideal for use in situations where fast-moving images are displayed. The all-viewing angle feature ensures that the display can be viewed from any angle without any loss of image quality.

The IPS LCD Display is a versatile display that can be used in a variety of applications, such as gaming, industrial control, medical equipment, and more. The high brightness of 500nits makes it ideal for use in outdoor settings or in environments with bright lighting. The display is easy to install and can be used in both portrait and landscape modes.

In conclusion, the IPS LCD Display is a high-quality and versatile display that offers all the features required for a wide range of applications. Its small size, fast response time, and all-viewing angle feature make it an ideal choice for use in a variety of settings.

Features:

Product Name: TFT-LCD Display

Response Time: 5ms

Size: 7 Inch

Display Scale: 16:9

Viewing: All Viewing Angle

Resolution: 1024x600

IPS LCD Display

Brightness: 500nits

Technical Parameters:

Technical Parameter	Value
Response Time	5ms
Active Area	154.08mmx85.92mm
Viewing	All Viewing Angle
Outline Dim	165mm*100mm*3.5mm
Interface	40pin LVDS
Color Depth	262K
Display Scale	16:9
Size	7 Inch
Display Colors	16.7M
Backlight Luminance	500 Cd/m2

Applications:

This IPS LCD display has a display scale of 16:9 and has an outline dimension of 165mm x 100mm x 3.5mm. It has a color depth of 262K and can be viewed from all viewing angles. This makes it a perfect display for various occasions and scenarios.

The ZH070IK40035 TFT LCD Display has a backlight luminance of 500 Cd/m2, which makes it perfect for use in bright settings. It is also equipped with driver ic ST7789, which enhances its performance and makes it easy to use.

This display is suitable for a range of applications, including but not limited to:

Smart home devices: The IPS LCD display's all viewing angle feature makes it the perfect display for smart home devices such as thermostats, home security systems, and smart lighting systems. The display's crisp and clear picture quality ensures that users can easily read the information displayed.

Industrial Equipment: The ZH070IK40035 TFT LCD Display is also suitable for industrial equipment such as manufacturing machines and control systems. Its all viewing angle feature ensures that operators can easily view the display from any angle, making it easy to monitor the equipment and make necessary adjustments.

Medical Devices: The display's high-quality image resolution makes it suitable for medical devices such as patient monitors and diagnostic equipment. Its all viewing angle feature ensures that medical professionals can easily see the displayed information from any angle.

Consumer Electronics: The ZH070IK40035 TFT LCD Display is perfect for use in a range of consumer electronics products such as digital cameras and portable media players. Its all viewing angle feature ensures that users can easily view their media from any angle. In conclusion, the ZH070IK40035 TFT LCD Display is a versatile and high-quality display that can be used in a range of applications due to its all viewing angle feature. Its driver ic ST7789 enhances its performance, making it easy to use. Its high backlight luminance makes it suitable for use in bright settings, and its certification of ROHS ensures that it meets all necessary safety standards.



Shenzhen Zhuohong Electronic Technology Co., Ltd.



13728899479



alice@zhuohongelectric.com



tft-displaylcd.com

Room 405, No. 1319-9, GuanGuang Road, XinLan Community, GuanLanStreet, LongHua District, 518110
ShenZhen China