



## 350Nit 7 Inch Ips Screen 154.21 X 85.92 IPS LCD Panel 50 Pin RGB Interface Display

### Our Product Introduction

for more products please visit us on [tft-displaylcd.com](http://tft-displaylcd.com)

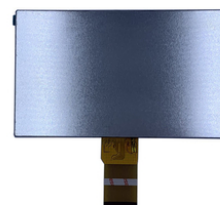
#### Basic Information

- Place of Origin: China
- Brand Name: OEM
- Certification: ROHS
- Model Number: T70CRHFRPi-V19
- Minimum Order Quantity: 1 pieces
- Price: Negotiated
- Packaging Details: Carton Packing
- Delivery Time: 7-15 working days
- Payment Terms: T/T
- Supply Ability: 300k per month



#### Product Specification

- Outline Dimension: 164.9×100.00×2.9mm
- Storage Temp: -30 ~ +80
- Display Mode: IPS / Transmissive / Normally Black
- Luminance: 350 Cd/m2
- Lcd Active Area: 154.21(H) × 85.92(V)
- Operating Temp: -20 ~ +70
- Tft Interface: 50pin RGB
- Material: Glass
- Highlight: 350nit 7 inch ips screen, ips lcd panel 50 pin, 154.21 x 85.92 ips lcd panel



## Product Description

### 7 Inch 350 Nit Brightness 154.21(H)X85.92(V) Active Area Glass IPS LCD Panel 50 Pin RGB Interface Display

#### Product Description:

The IPS panel technology delivers a high contrast ratio of 500:1, providing excellent image quality with deep blacks and vivid colors. This display is perfect for use in applications that require high-quality visuals, such as gaming, video playback, or graphic design. The IPS LCD Display has a storage temperature range of -30 ~ +80 , making it suitable for use in a variety of environments. Its black color provides a sleek and professional look that will complement any device or application that it is used with. Overall, the IPS LCD Display is a fantastic display option for those who need high-quality visuals with excellent color accuracy. Its IPS panel technology, 500:1 contrast ratio, and 350 Cd/m2 luminance make it an excellent choice for a variety of applications, including gaming, video playback, or graphic design.



#### Features:

Product Name: IPS LCD Display  
Luminance: 350 Cd/m2  
LCD Active Area: 154.21(H) × 85.92(V)  
Material: Glass  
TFT Interface: 50pin RGB  
Display Mode: IPS / Transmissive / Normally Black  
Panel type: IPS panel  
Orientation: Landscape  
Color: Black

#### Technical Parameters:

LCD Active Area	154.21(H) × 85.92(V)
Backlight Technology	LED
Model Size	7 Inch

Storage Temp	-30 ~ +80
Luminance	350 Cd/m2
Display Mode	IPS / Transmissive / Normally Black
Outline Dimension	164.9×100.00x2.9mm
Material	Glass
Resolution	1024x600
TFT Interface	50pin RGB
Contrast Ratio	500:1
Panel Orientation	Landscape

## Applications:

The TFT interface of this IPS LCD Display is 50pin RGB and it has a luminance of 350 Cd/m2. The display mode is IPS/Transmissive/Normally Black and it has a model size of 7 inches with an outline dimension of 164.9×100.00x2.9mm. This IPS LCD Display is suitable for a variety of product application occasions and scenarios. It can be used as a tablet display due to its high-quality 1024x600 display resolution, making it perfect for gaming, streaming, and browsing. With a contrast ratio of 500:1, this IPS LCD Display provides a clear and vivid image, making it ideal for use in educational settings, digital signage, and medical equipment.

## FAQ:

**Q: What is the brand name of this IPS LCD Display?**

A: The brand name of this IPS LCD Display is OEM.

**Q: What is the model number of this IPS LCD Display?**

A: The model number of this IPS LCD Display is T70CRHFRPi-V19.

**Q: Where is this IPS LCD Display manufactured?**

A: This IPS LCD Display is manufactured in China.

**Q: What certifications does this IPS LCD Display have?**

A: This IPS LCD Display has ROHS certification.

**Q: What is the minimum order quantity for this IPS LCD Display?**

A: The minimum order quantity for this IPS LCD Display is 1 piece.

**Q: What is the price of this IPS LCD Display?**

A: The price of this IPS LCD Display is negotiated.

**Q: How is this IPS LCD Display packaged?**

A: This IPS LCD Display is packaged in carton packing.

**Q: What is the delivery time for this IPS LCD Display?**

A: The delivery time for this IPS LCD Display is 7-15 working days.

**Q: What payment terms are accepted for this IPS LCD Display?**

A: The payment terms accepted for this IPS LCD Display are T/T.

**Q: What is the supply ability of this IPS LCD Display?**

A: The supply ability of this IPS LCD Display is 300k per month.



**Shenzhen Zhuohong Electronic Technology Co., Ltd.**



13728899479



alice@zhuohongelectric.com



tft-displaylcd.com

Room 405, No. 1319-9, GuanGuang Road, XinLan Community, GuanLanStreet, LongHua District, 518110  
ShenZhen China