



2.8 Inch Small TFT LCD Display 250Cd/M2 240x320 Tft Lcd Screen 3.3V

Our Product Introduction

for more products please visit us on tft-displaylcd.com

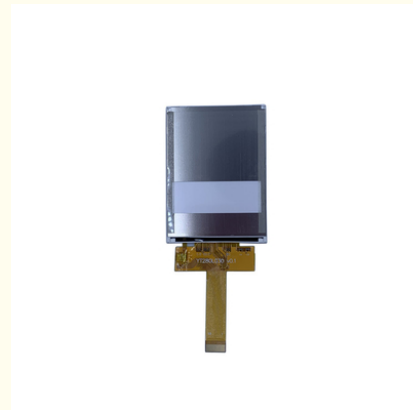
Basic Information

- Place of Origin: China
- Brand Name: OEM
- Certification: ROHS
- Model Number: ZH280L030
- Minimum Order Quantity: 1 pieces
- Price: Negotiated
- Packaging Details: Carton Packing
- Delivery Time: 7-15 working days
- Payment Terms: T/T
- Supply Ability: 300k per month



Product Specification

- Contrast Ratio: 500:1
- Screen Size: 2.8 Inches
- Viewing Direction: 12 O'Clock
- Brightness: 250Cd/m2
- Touch Screen: No
- Drive IC: ILI9341
- Display Type: TFT
- Power Supply: 3.3V
- Highlight: 240x320 tft lcd screen, tft lcd screen 3.3v, small lcd display screen



Product Description

2.8 Inch 240x320 Tft Lcd Screen / Tiny Tft Lcd Display With 3.3V Power Supply

Product Description:

One of the standout features of this TFT monitor is its impressive contrast ratio of 500:1, which ensures clear and crisp images. It also boasts a wide operating temperature range, making it suitable for use in a variety of environments. With a storage temperature of -30 to 80 degrees Celsius, you can be confident that this display will remain functional even in extreme temperatures.

Designed with power efficiency in mind, this TFT LCD screen operates on a 3.3V power supply. This means that it provides a reliable and consistent performance without consuming an excessive amount of power. In addition, it does not come fitted with a touch screen, which reduces its power consumption even further.

Overall, our Petite TFT Monitor is a versatile and reliable display solution that offers exceptional performance. Whether you're building a handheld device, an industrial control panel, or any other application that requires a small, high-quality TFT LCD screen, this product is sure to exceed your expectations.



Features:

Product Name: Small TFT LCD Display

Power Supply: 3.3V

Brightness: 250Cd/m2

Drive IC: ILI9341

Screen Size: 2.8 Inches

Interface Type: 4 Line-SPI Interface

This Miniature Thin Film Transistor Display, Little Thin Film Transistor LCD, and Petite TFT Monitor has a screen size of 2.8 inches and a brightness level of 250Cd/m2. The power supply needed is 3.3V and the drive IC used is ILI9341. It also features a 4 line-SPI interface type.

Technical Parameters:

Product Attribute	Technical Parameter
Product Name	Miniature Thin Film Transistor Display

Drive IC	ILI9341
Viewing Direction	12 O'Clock
Power Supply	3.3V
Brightness	250Cd/m2
Resolution	240x320 Pixels
Backlight Type	LED
Storage Temperature	-30 To 80 Degrees Celsius
Screen Size	2.8 Inches
Touch Screen	No
Contrast Ratio	500:1
Product Type	Tiny TFT LCD Display / TFT LCD Screen

Applications:

One of the most common uses for this Petite TFT Monitor is in handheld devices. With a display size of just 2.8 inches, it is perfect for devices like smartphones, gaming consoles, and handheld GPS units. The Miniature Thin Film Transistor Display is also a great choice for wearables, such as smartwatches and fitness trackers, as it is small enough to fit comfortably on the wrist, while still delivering vibrant and clear visuals.

In addition to handheld devices, the ZH280L030 is also an excellent choice for industrial and commercial applications. The high contrast ratio of 500:1 and brightness of 250Cd/m2 make it easy to view in a variety of lighting conditions, making it ideal for outdoor signage, ATMs, and other self-service kiosks. The LED backlight ensures that the display is energy-efficient and long-lasting, making it a cost-effective choice for businesses.

The ZH280L030 is certified with ROHS, ensuring that it meets all safety and environmental standards. It has a minimum order quantity of just 1 piece, making it easy to order in small quantities for prototyping or testing. The price is also negotiable, depending on the quantity ordered and other factors. The packaging details include carton packing for safe and secure transportation.

With a delivery time of just 7-15 working days and payment terms of T/T, the ZH280L030 is a convenient and reliable choice for businesses and consumers alike. OEM has a supply ability of 300k per month, ensuring that the display is always readily available when needed.

The ZH280L030 has a resolution of 240x320 pixels, making it a great choice for displaying graphics and images. The storage temperature range of -30 to 80 degrees Celsius means that it can be used in a wide range of environments without any issues. Overall, the ZH280L030 from OEM is a versatile and affordable display that is perfect for a variety of applications. Whether you need a display for a handheld device, a self-service kiosk, or an industrial machine, the ZH280L030 is sure to meet your needs.

FAQ:

Q1: What is the brand name of Small TFT LCD Display?

A1: The brand name of Small TFT LCD Display is OEM.

Q2: What is the model number of Small TFT LCD Display?

A2: The model number of Small TFT LCD Display is ZH280L030.

Q3: What is the place of origin of Small TFT LCD Display?

A3: The place of origin of Small TFT LCD Display is China.

Q4: Is Small TFT LCD Display certified?

A4: Yes, Small TFT LCD Display is certified with ROHS.

Q5: What is the minimum order quantity for Small TFT LCD Display?

A5: The minimum order quantity for Small TFT LCD Display is 1 piece.

Q6: What is the price for Small TFT LCD Display?

A6: The price for Small TFT LCD Display is negotiated.

Q7: How is Small TFT LCD Display packaged?

A7: Small TFT LCD Display is packaged in carton packing.

Q8: How long does it take to deliver Small TFT LCD Display?

A8: It takes 7-15 working days to deliver Small TFT LCD Display.

Q9: What are the payment terms for Small TFT LCD Display?

A9: The payment terms for Small TFT LCD Display are T/T.

Q10: What is the supply ability for Small TFT LCD Display?

A10: The supply ability for Small TFT LCD Display is 300k per month.



Shenzhen Zhuohong Electronic Technology Co., Ltd.



13728899479



alice@zhuohongelectric.com



tft-displaylcd.com

Room 405, No. 1319-9, GuanGuang Road, XinLan Community, GuanLanStreet, LongHua District, 518110
ShenZhen China