



2.8in Small TFT LCD Display 4 Line SPI Interface 12 O'Clock Tft Touch Display

Our Product Introduction

for more products please visit us on tft-displaylcd.com

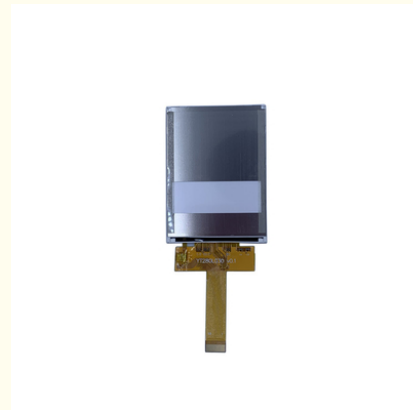
Basic Information

- Place of Origin: China
- Brand Name: OEM
- Certification: ROHS
- Model Number: ZH280L030
- Minimum Order Quantity: 1 pieces
- Price: Negotiated
- Packaging Details: Carton Packing
- Delivery Time: 7-15 working days
- Payment Terms: T/T
- Supply Ability: 300k per month



Product Specification

- Interface Type: 4 Line-SPI Interface
- Display Type: TFT
- Viewing Direction: 12 O'Clock
- Backlight Type: LED
- Operating Temperature: -20 To 70 Degrees Celsius
- Contrast Ratio: 500:1
- Touch Screen: No
- Power Supply: 3.3V
- Highlight: 12 o'clock tft touch display, 2.8in lcd tft touch, 2.8in tft touch display



Product Description

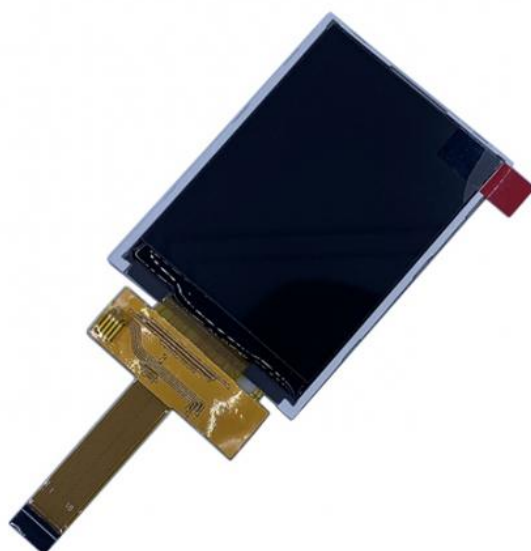
2.8" 240x320 TFT LCD Display With 4-Line SPI Interface 12 O'clock Viewing And -20 To 70.C Temp Range

Product Description:

But that's not all, the contrast ratio of our Tiny TFT LCD Display is an impressive 500:1, ensuring that images and text are displayed with stunning clarity and sharpness. This makes it perfect for applications such as GPS devices, portable media players, and even gaming consoles.

One of the key components of our Tiny TFT LCD Display is the drive IC, which is the ILI9341. This drive IC is known for its high performance and low power consumption, making it a great choice for portable devices that require long battery life. The ILI9341 also supports a range of interfaces including SPI, RGB, and MCU, making it a versatile choice for a wide range of applications.

So whether you're in need of a high-quality display for your handheld device, or require a versatile miniature display for your next project, our Small TFT LCD Display is the perfect solution. With its impressive resolution, viewing direction, contrast ratio, screen size, and drive IC, it's a display that won't disappoint.



Features:

Product Name: Small TFT LCD Display

Screen Size: 2.8 Inches

Brightness: 250Cd/m2

Display Type: TFT LCD Screen

Interface Type: 4 Line-SPI Interface

Storage Temperature: -30 To 80 Degrees Celsius

Technical Parameters:

Product Attribute	Value
Product Name	Miniature Thin Film Transistor Display
Display Type	Tiny TFT LCD Display
Screen Type	TFT LCD Screen

Power Supply	3.3V
Backlight Type	LED
Brightness	250Cd/m2
Resolution	240x320 Pixels
Drive IC	ILI9341
Viewing Direction	12 O'Clock
Contrast Ratio	500:1
Interface Type	4 Line-SPI Interface
Touch Screen	No

Applications:

The TFT LCD screen is perfect for a range of applications, including portable devices such as smartphones, tablets, and handheld gaming consoles. It can also be used in small appliances, such as digital cameras, and as a display in automotive applications.

The viewing direction of the ZH280L030 is 12 o'clock, making it ideal for use in products that are held in portrait orientation. The contrast ratio is 500:1, which means that the display is easy to read in all lighting conditions. The brightness of 250Cd/m2 ensures that the display is bright and clear, even in direct sunlight.

This particular display does not have a touch screen, but it is still perfect for applications that do not require touch functionality. The TFT display type ensures that the image quality is high, with vibrant colors and crisp images.

In summary, the ZH280L030 Little Thin Film Transistor LCD from OEM is a high-quality petite TFT monitor that is perfect for a range of applications. It has a viewing direction of 12 o'clock, a contrast ratio of 500:1, and a brightness of 250Cd/m2. It does not have touch functionality, but the TFT display type ensures that the image quality is excellent. You can order as little as one piece, and the supply ability is 300k per month, making it a great choice for any product that requires a small, high-quality display

FAQ:

Q: What is the brand name of this Small TFT LCD Display product?

A: The brand name of this product is OEM.

Q: What is the model number of this product?

A: The model number of this product is ZH280L030.

Q: Where is this product manufactured?

A: This product is manufactured in China.

Q: Does this product have any certification?

A: Yes, this product has ROHS certification.

Q: What is the minimum order quantity for this product?

A: The minimum order quantity for this product is 1 piece.

Q: What is the delivery time for this product?

A: The delivery time for this product is 7-15 working days.

Q: What are the accepted payment terms for this product?

A: The accepted payment terms for this product are T/T.

Q: What is the supply ability for this product?

A: The supply ability for this product is 300k per month.

Q: How is the product packaged?

A: The product is packaged in carton packing.

Q: Is the price for this product negotiable?

A: Yes, the price for this product is negotiable.



Shenzhen Zhuohong Electronic Technology Co., Ltd.



13728899479



alice@zhuohongelectric.com



tft-displaylcd.com

Room 405, No. 1319-9, GuanGuang Road, XinLan Community, GuanLanStreet, LongHua District, 518110
ShenZhen China