



240x320 Pixels Small 2.4 Inch Tft Display 250Cd/M2 No Touch Screen Tft Color Display

Our Product Introduction

for more products please visit us on tft-displaylcd.com

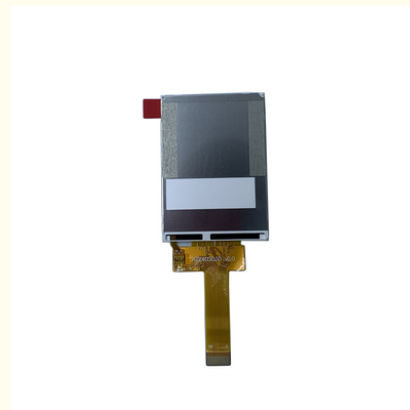
Basic Information

- Place of Origin: China
- Brand Name: OEM
- Certification: ROHS
- Model Number: ZH240S030
- Minimum Order Quantity: 1 pieces
- Price: Negotiated
- Packaging Details: Carton Packing
- Delivery Time: 7-15 working days
- Payment Terms: T/T
- Supply Ability: 300k per month



Product Specification

- Power Supply: 3.3V
- Resolution: 240x320 Pixels
- Interface Type: 4 Line-SPI Interface
- Display Type: TFT
- Backlight Type: LED
- Brightness: 250Cd/m2
- Viewing Direction: 12 O'Clock
- Storage Temperature: -30 To 80 Degrees Celsius
- Highlight: **small 2.4 inch tft display,**
2.4 inch tft display 250cd/m2,
no touch screen tft color display



Product Description

2.4 Inch 240x320 Pixels Small TFT LCD Display With 250Cd/M2 Brightness No Touch Screen

Product Description:

Powered by the ST7789V drive IC, this Small TFT LCD Display delivers crisp and clear images with vibrant colors. The display type is TFT, ensuring a high-quality viewing experience. Plus, with its 12 O'clock viewing direction, you can view the display from any angle without any issues.

Whether you're working on a wearable device or a small handheld device, this Small TFT LCD Display is the perfect choice. It is compact, lightweight and easy to integrate into your design. With its high resolution and vibrant colors, your content will look sharp and eye-catching.

Overall, if you're looking for a reliable and high-quality display for your compact device, then our Small TFT LCD Display is the perfect solution. Order now and experience the benefits of this little Thin Film Transistor LCD for yourself!



Features:

Product Name: Small TFT LCD Display

Interface Type: 4 Line-SPI Interface

Screen Size: 2.4 Inches

Brightness: 250Cd/m2

Viewing Direction: 12 O'Clock

Operating Temperature: -20 To 70 Degrees Celsius

This Miniature Thin Film Transistor Display is a Tiny TFT LCD Display with a 4 Line-SPI Interface. It has a 2.4 inch screen with a brightness of 250Cd/m2 and a viewing direction of 12 O'Clock. This display is designed to operate in temperatures ranging from -20 to 70 degrees Celsius.

Technical Parameters:

Product Attribute	Value
Petite TFT Monitor	Yes
Little Thin Film Transistor LCD	Yes

Backlight Type	LED
Interface Type	4 Line-SPI Interface
Viewing Direction	12 O'Clock
Brightness	250Cd/m2
Resolution	240x320 Pixels
Contrast Ratio	500:1
Drive IC	ST7789V
Touch Screen	No
Power Supply	3.3V
Operating Temperature	-20 To 70 Degrees Celsius

Applications:

The Small TFT LCD Display is suitable for a wide range of product application occasions and scenarios. It can be used in medical equipment, automotive displays, handheld devices, home appliances, and other electronic devices. The miniature thin film transistor display is ideal for devices that require a compact and lightweight display. The tiny TFT LCD display is designed to fit in small spaces, making it perfect for devices that have limited space.

The TFT LCD screen has a brightness of 250Cd/m2, making it easy to view in any light condition. It has an operating temperature range of -20 to 70 degrees Celsius, which makes it suitable for use in extreme environments. The contrast ratio of this display is 500:1, which enhances the visual experience of the user.

FAQ:

Q1: What is the brand name of this small TFT LCD display?

A1: The brand name of this product is OEM.

Q2: What is the model number of this small TFT LCD display?

A2: The model number of this product is ZH240S030.

Q3: Where is this small TFT LCD display manufactured?

A3: This product is made in China.

Q4: Does this small TFT LCD display have any certifications?

A4: Yes, this product is certified with ROHS.

Q5: What is the minimum order quantity for this small TFT LCD display?

A5: The minimum order quantity for this product is 1 piece. However, please note that the price is negotiable and the packaging details include carton packing. The delivery time is 7-15 working days and the payment terms are T/T. Additionally, the supply ability is 300k per month.



Shenzhen Zhuohong Electronic Technology Co., Ltd.



13728899479



alice@zhuohongelectric.com



tft-displaylcd.com

Room 405, No. 1319-9, GuanGuang Road, XinLan Community, GuanLanStreet, LongHua District, 518110
ShenZhen China