



2.4 Inch Small LCD Touch Screen 240x320 Tft Display Module 4 Line SPI Interface

Our Product Introduction

for more products please visit us on tft-displaylcd.com

Basic Information

- Place of Origin: China
- Brand Name: OEM
- Certification: ROHS
- Model Number: ZH240S030V.C
- Minimum Order Quantity: 1 pieces
- Price: Negotiated
- Packaging Details: Carton Packing
- Delivery Time: 7-15 working days
- Payment Terms: T/T
- Supply Ability: 300k per month



Product Specification

- Viewing Angle: 12 O'clock
- Dot Arrangement: 240×3(RGB)×320 Dots
- Display Mode: TN/Transmissive
- Operation Temp: -20~ +70
- Tft Lcd Type: 2.4"TFT
- Interface: 4 Line-SPI Interface
- Driver Ic: ST7789
- Storage Temp: -30~ +80
- Highlight: 240x320 tft display module,
small lcd touch screen 240x320,
2.4 inch small lcd touch screen

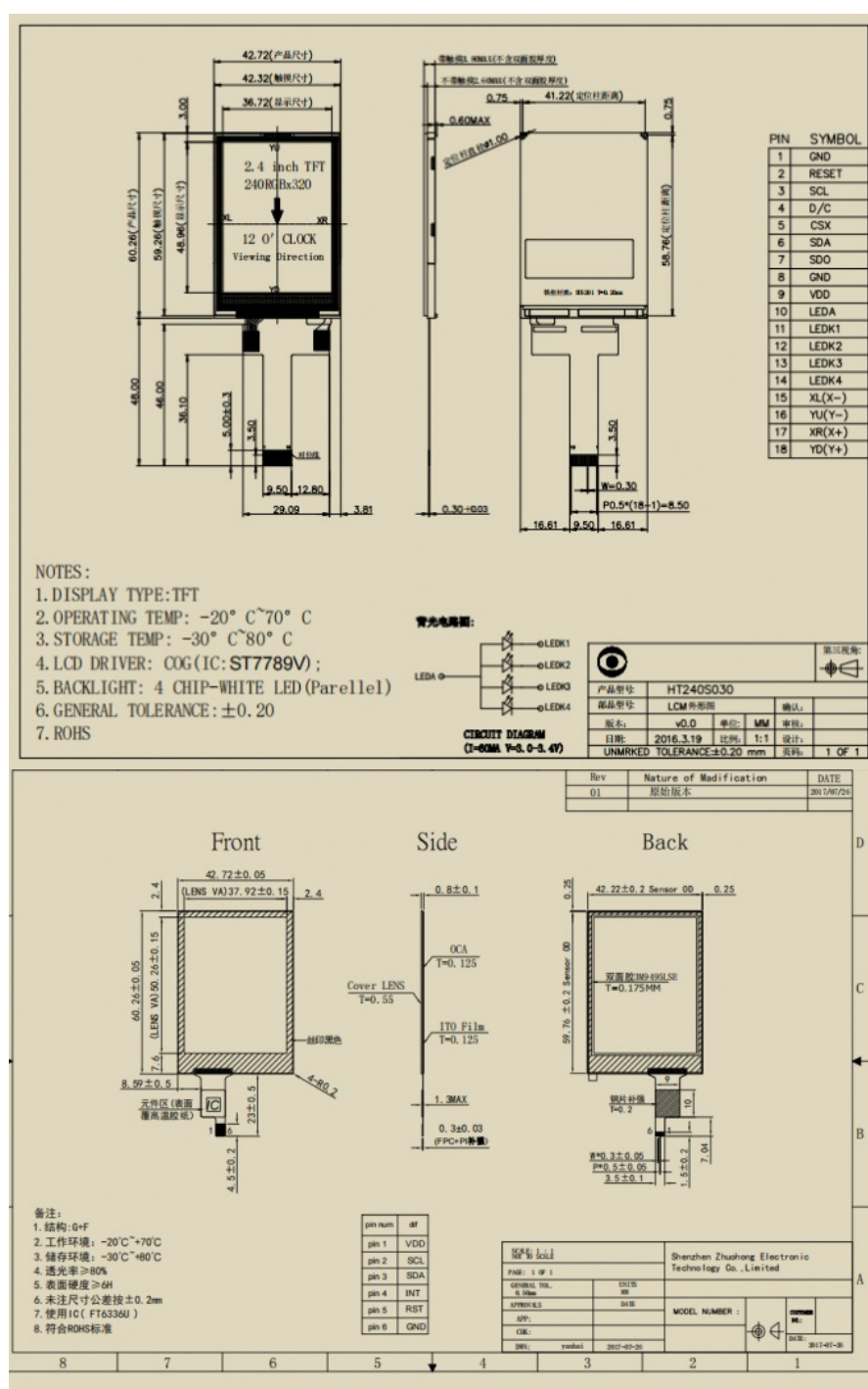
The Small LCD Touch Screen is a high-quality display that is perfect for use in a variety of applications. With a 4 Line-SPI Interface, this display is easy to use and provides reliable performance.

The display boasts a brightness of 220 Cd/m², making it easy to read even in bright environments. The TFT Active Area measures 36.72(H)×48.96(V) Mm, providing ample space for displaying information.

This Small LCD Touch Screen is particularly suitable for use as a water purifier display, thanks to its driver ic ili9341. With this driver ic, the display is able to provide clear and accurate information about the water purification process.

The TN display of this Small LCD Touch Screen ensures that the information displayed is easy to read, even in low light conditions. This makes it ideal for use in environments where lighting may be limited, such as in a water purification facility.

Overall, the Small LCD Touch Screen is a high-quality display that is ideal for a wide range of applications. With its 4 Line-SPI Interface, high brightness, and TN display, it is an excellent choice for anyone in need of a reliable and easy-to-use display.





Features:

Product Name: Small LCD Touch Screen
Touch Type: Capacitive
Screen Size: 2.4 Inches
Viewing Angle: 12 O'clock
Driver Ic: ST7789
Storage Temp: -30~ +80
Display Type: TN display
Suitable for: Water purifier display

Technical Parameters:

Screen Size	2.4 Inches
Brightness	220 Cd/m²
Touch Type	Capacitive
Display Type	TFT LCD
Operation Temp	-20~ +70
Storage Temp	-30~ +80
Tft Active Area	36.72(H)*48.96(V) Mm
Interface	4 Line-SPI Interface
Display Mode	TN/Transmissive
Dot Arrangement	240×3(RGB)×320 Dots

This is a 2.4 inch TFT LCD with a luminance of 220 nits. It has a capacitive touch screen and a dot arrangement of 240×3(RGB)×320 Dots.

Applications:

Our OEM ZH240S030V.C Small LCD Touch Screen is a versatile product that can be used in a variety of occasions and scenarios. With its ROHS certification, you can rest assured that it is safe to use and environmentally friendly. The minimum order quantity for this product is 1 piece, and the price is negotiable. It comes in carton packing and has a delivery time of 7-15 working days. Payment terms are T/T, and the supply ability is 300k per month. One of the key features of this product is its 4 Line-SPI interface, which makes it easy to connect to other devices. The display mode is

TN/transmissive, and the TFT active area is 36.72(H)*48.96(V) mm. The luminance of the screen is 220nits, making it easy to read in various lighting conditions.

The driver IC for this LCD touch screen is ST7789, which ensures that it delivers high-quality images and graphics. It has an outline size of 42.72*60.26*2.6 mm, making it compact and easy to install. This LCD touch screen can be used in a variety of occasions and scenarios, including:

Industrial control systems: It can be used in industrial control systems to display data and information in real-time. The small size makes it ideal for use in tight spaces.

Medical equipment: This LCD touch screen can be used in medical equipment to display vital signs, test results, and other information.

The luminance of the screen makes it easy to read even in bright light.

Consumer electronics: It can be used in consumer electronics such as smartwatches, fitness trackers, and other wearable devices. The touch screen interface allows users to interact with the device easily.

Automotive applications: This LCD touch screen can be used in automotive applications such as car navigation systems and entertainment systems. The compact size makes it easy to install in the dashboard or other parts of the car.

In summary, the OEM ZH240S030V.C Small LCD Touch Screen is a versatile and high-quality product that can be used in a variety of occasions and scenarios. Its compact size, high luminance, and ST7789 driver IC make it an excellent choice for industrial control systems, medical equipment, consumer electronics, and automotive applications. Contact us today to learn more about this product and to place your order.

FAQ:

Q1: What is the brand name of this product?

A1: The brand name of this LCD touch screen is OEM.

Q2: What is the model number of this product?

A2: The model number of this LCD touch screen is ZH240S030V.C.

Q3: Where is this product manufactured?

A3: This LCD touch screen is manufactured in China.

Q4: Is this product certified?

A4: Yes, this LCD touch screen is ROHS certified.

Q5: What is the minimum order quantity for this product?

A5: The minimum order quantity for this LCD touch screen is 1 piece. However, the price is negotiable for larger orders.

Q6: What is the packaging details for this product?

A6: The packaging details for this LCD touch screen is Carton Packing.

Q7: How long will it take to receive this product?

A7: The delivery time for this LCD touch screen is 7-15 working days.

Q8: What are the payment terms for this product?

A8: The payment terms for this LCD touch screen is T/T (Telegraphic Transfer).

Q9: What is the supply ability of this product?

A9: The supply ability of this LCD touch screen is 300k per month.



Shenzhen Zhuohong Electronic Technology Co., Ltd.



13728899479



alice@zhuohongelectric.com



tft-displaylcd.com

Room 405, No. 1319-9, GuanGuang Road, XinLan Community, GuanLanStreet, LongHua District, 518110
ShenZhen China