

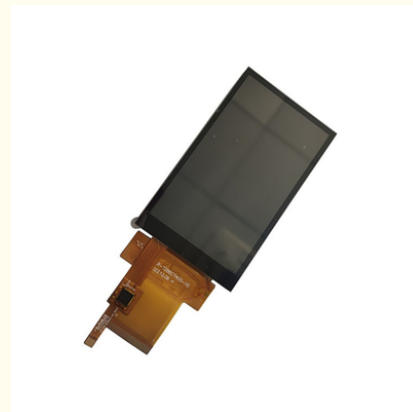
3.97in GT911 TFT LCD Touch Screen 500 Nits 12 O'clock Viewing Capacitive Touchscreen

Our Product Introduction

for more products please visit us on tft-displaylcd.com

Basic Information

- Place of Origin: China
- Brand Name: OEM
- Certification: ROHS
- Model Number: FLR-T113CT400
- Minimum Order Quantity: 1 pieces
- Price: Negotiated
- Packaging Details: Carton Packing
- Delivery Time: 7-15 working days
- Payment Terms: T/T
- Supply Ability: 300k per month



Product Specification

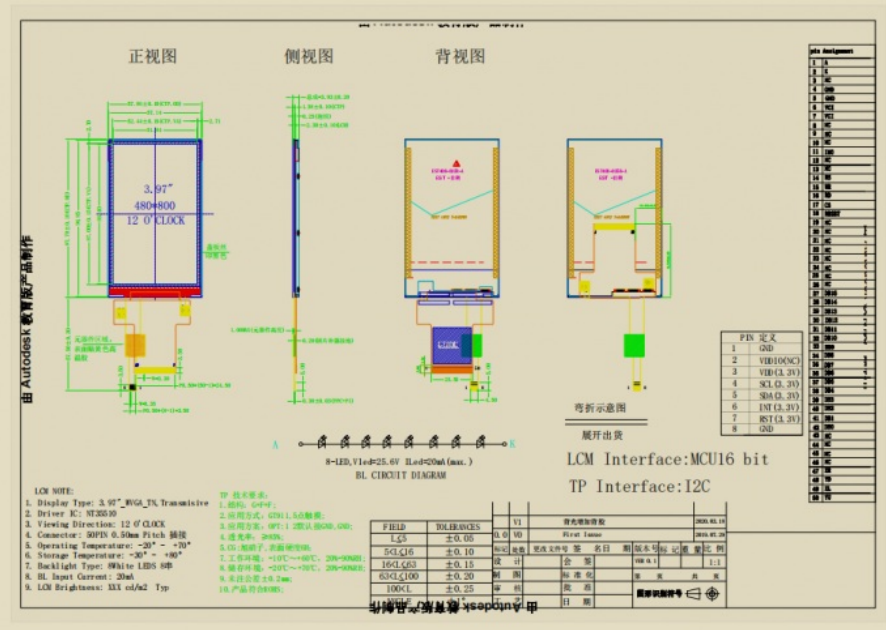
- Touch IC: GT911
- Interface Type: RGB/MCU
- Resolution: 480x800
- Surface Treatment: Anti-Glare
- Luminance: 500
- Viewing Direction: 12 O'clock
- Storage Temperature: -30 ~ +80
- Ctp Structure: G+F+F
- Highlight: 3.97in TFT LCD Touch Screen ,
GT911 TFT LCD Touch Screen ,
12 O'clock tft lcd capacitive touchscreen



3.97" GT911 Capacitive TFT LCD Touch Screen With 500 Nits 12 Oclock Viewing

Product Description:

Our TFT LCD touch screen is built with a touch IC of GT911, making it highly responsive with a response time of only 5ms. This makes it perfect for use in a wide range of applications, including industrial control systems, medical equipment, and portable devices. One of the best features of our TFT LCD touch screen is its storage temperature range of -30 ~ +80, ensuring that it can withstand even the harshest of environments. Whether you are using it indoors or outdoors, you can be sure that it will perform reliably and accurately. With a capacitive touch screen, our TFT LCD touch screen provides a highly intuitive and responsive interface that is easy to use and navigate. Whether you are scrolling through menus or typing on a virtual keyboard, you can be sure that the touch screen will respond accurately and quickly. In conclusion, our TFT LCD touch screen is a versatile and reliable display that is perfect for a wide range of applications. With its capacitive touch screen, 3.97" TFT LCD, 50PIN RGB interface, NT35510 display IC, GT911 touch IC, luminance of 500, and response time of 5ms, it is sure to meet all of your display needs.



Features:

- Product Name: TFT LCD Touch Screen
- Surface Treatment: Anti-Glare
- Ctp Structure: G+F+F
- Backlight Type: LED
- Viewing Direction: 12 O'clock
- Display Technology: A-Si TFT Active Matrix
- Viewing Angle: 12 o'clock
- Resolution: 480x800
- Touch IC: GT911

Technical Parameters:

Technical Parameter	Value
Response Time	5ms
Backlight Type	LED
Interface Type	RGB/MCU
Storage Temperature	-30 ~ +80
Viewing Direction	12 O'clock
Resolution	480x800
Surface Treatment	Anti-Glare
Touch IC	GT911

Display IC	NT35510
Size	3.97"

Applications:

One of the best applications for the FLR-T113CT400 is in industrial settings. With its certification of ROHS and a storage temperature range of -30 ~ +80, this touch screen can withstand harsh environments and is perfect for industrial control systems, test and measurement equipment, and more.

The FLR-T113CT400 is also great for medical applications. With its anti-glare surface treatment, it minimizes any reflections that could interfere with medical imaging. This touch screen can be used in medical monitoring equipment, patient monitoring systems, and more. Another application where this touch screen excels is in the automotive industry. With its capacitive touch technology, it is easy to use while driving and can be used in GPS navigation systems, multimedia systems, and more. Its 12 O'clock viewing direction also makes it easy to read in any position.

Finally, the FLR-T113CT400 is perfect for consumer electronics. Its small size and high resolution make it ideal for use in smartphones, tablets, and other portable devices. With a supply ability of 300k per month, it is also perfect for manufacturers looking to incorporate a high-quality touch screen in their products.

Overall, the OEM FLR-T113CT400 TFT LCD Touch Screen is a versatile and reliable product that is perfect for a wide range of applications. With a minimum order quantity of 1 piece and a negotiated price, it is accessible to businesses of all sizes. The packaging details are also convenient as it comes in a carton packing and has a delivery time of 7-15 working days. Payment terms are also flexible as it accepts T/T.

FAQ:

Q: What is the brand name of this TFT LCD Touch Screen product?

A: The brand name of this product is OEM.

Q: What is the model number of this TFT LCD Touch Screen product?

A: The model number of this product is FLR-T113CT400.

Q: Where is this TFT LCD Touch Screen product manufactured?

A: This product is manufactured in China.

Q: Does this TFT LCD Touch Screen product come with any certifications?

A: Yes, this product is ROHS certified.

Q: What is the minimum order quantity for this TFT LCD Touch Screen product?

A: The minimum order quantity for this product is 1 piece.

Q: What is the price of this TFT LCD Touch Screen product?

A: The price of this product is negotiated based on the order quantity and other factors.

Q: What are the packaging details for this TFT LCD Touch Screen product?

A: This product is packaged in cartons.

Q: What is the delivery time for this TFT LCD Touch Screen product?

A: The delivery time for this product is 7-15 working days.

Q: What are the payment terms for this TFT LCD Touch Screen product?

A: The payment terms for this product are T/T.

Q: What is the supply ability of this TFT LCD Touch Screen product?

A: The supply ability of this product is 300k per month.



Shenzhen Zhuohong Electronic Technology Co., Ltd.



13728899479



alice@zhuohongelectric.com



tft-displaylcd.com

Room 405, No. 1319-9, GuanGuang Road, XinLan Community, GuanLanStreet, LongHua District, 518110
ShenZhen China