



Compatible TFT LCD Monitor 7 Inch 1024x600 IPS RGB Interface Raspberry Pi Tft Display

Our Product Introduction

for more products please visit us on tft-displaylcd.com

Basic Information

- Place of Origin: Guangdong, China
- Brand Name: oem
- Certification: ROHS、ISO9001、CE
- Model Number: ZH070IK40025H
- Minimum Order Quantity: 1
- Price: Negotiated
- Packaging Details: Carton Packing
- Delivery Time: 7-15 working days
- Payment Terms: T/T, Western Union
- Supply Ability: 300k per month

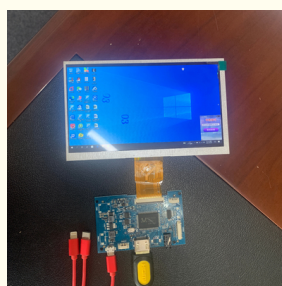
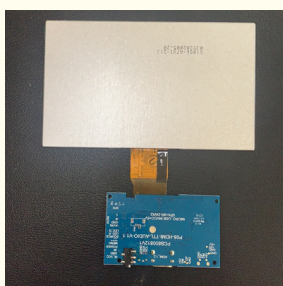


Product Specification

- Application: Raspberry Pi; Medical
- Interface: 40pin LVDS; 50PIN RGB, 50pin RGB
- Type: Capacitive, 7" Tft Lcd With Driver Board
- Size: 164.9(H) X 100.00(V) x 2.9(Typ)
- Color: Black
- Luminance: 300nits
- Contrast Ratio: 16:9
- Resolution: 1024x600
- Viewing Direction: Free
- Warranty: 1 Year
- Active Area: 154.21(H) X 85.92(V)
- Highlight: compatible tft lcd monitor, tft lcd monitor 7 inch , rgb interface raspberry pi tft display



More Images



Product Description

Raspberry Pi Compatible 7 inch 1024x600 IPS TFT LCD Module with RGB Interface

Product Description

| | |
|-------------------------|----------------------------------|
| Part Number: | ZH070IK40025H |
| Size: | 7.0 inches |
| Resolution: | 1024x 3(RGB) x600 |
| Aspect ratio: | 16:9 |
| Module size: | 164.9(W) × 100.00(H) × 2.9(D) mm |
| Active area: | 154.21(W) × 85.92(H) mm |
| Viewing angle: | 80/80/80/80 |
| Operating temperatures: | -20 to 70 |
| Storage temperature: | -30 to 80 |
| Brightness: | 320cd/m2 |
| Interface: | 50pin RGB |
| Board: | HDMI driver board |

Pls feel free to ask for datasheet of ZH070IK40025H!

Packaging & Shipping

SHIPMENT



7-10 working days
WWW.TNT.COM



5-7 working days
WWW.EMS.COM.CN



5-7 working days
WWW.DHL.COM



5-7 working days
WWW.UPS.COM



5-7 working days
WWW.FEDEX.COM



Our Services

Our Advantage

why choose us

PROFESSIONAL

We have in the Production of razor supplies with 12 years of experiences

ONE-STOP

We have our own factory, professional equipment to insure production

PRICE

We will provide you the best price, it is the absolute value for money

OEM&ODM

OEM/ODM orders are welcomed, we are trying to meet all your needs

SERVICE

We have a comprehensive after-sales service with 24-hour service

1. Replacement within 30 days after the shipment of products from us due to products' problems.
2. We can print your logo and stick your model No. on the cameras.
3. We have long cooperation with many shipping companies and our export volume is large. The shipping companies can offer us good discounts.
4. Professional technician supports. We have a good after-sales service team to solve your problems in time.
5. All goods will be inspected and tested before shipment.
6. Customer's satisfactory is most important to us. If you have any problem or questions regarding our transaction, please contact us by Trademanager or Email. It will be

responded within 24 hours.

Company Information

ZhuoHong Electronic Technology has been specializing in **TFT LCD display and touch screen** more than 10years. There are **90% of our business is custom made display modules for projects such as industrial devices, medical and smart home applications**. Our mission is to provide customer one-stop solution. With LCD display and touch screen as our product center, great trust is built with our customers.



FACTORY SHOW



COG Automatic Plant



Bonding IC



Rubberizing



Sample production



Assembling



QC testing

Company Products Main Application



Industrial meter



BPG



POS machine



Washing machine



Thermometer



Calculator



Car speedometer



GPS tracker



Electric cooker



Hair curler



Fuel dispenser



Watch

Application: Industrial Control/ Home Automation / digital photo frame / Automotive display /portable DVD player / POS Machine, Car navigation, Robot, Medical device, Phone and so on;

FAQ

Q: When can i get the quotation?

A: We usually quote within 12 hours after we got your inquiry.

If it is very urgent, please call us or contact us via email, Skype or WhatsApp.

Q: What is your warranty?

A: We provide one year warranty.

Q: May i buy samples from you?

A: Yes! You are welcome to place sample order to test our superior quality and service.

Q: How to place bulk order?

A: 1) Tell us model number, quantity, color and other special requirements.

2) Proforma Invoice will be made and sent to you for approval

3) Production will be arranged once get your payment or deposit.

4) Goods will be delivered as stated on the Proforma Invoice.

Q: How will you deliver my goods to me?

A: We provide as many shipping options as possible, such as DHL, UPS, FEDEX, TNT AND EMS to enable our customers get their goods rapidly at door. We also ship by economical method such as air cargo and sea cargo, direct line, air mail according to customers' request.

Q: What about the quality of your product?

A: We provide unrivaled quality: very rigorous testing process for incoming quality control, input process quality control, and final quantity control for every piece. We follow QC test procedure, and do 100% FQC to ensure your satisfaction.

Q: Can you provide OEM service?

A: Yes! We can provide professional OEM service.

Q: What payment method do you accept?

A: T/T(bank transfer), L/C and paypal

Q: Do you have any after-sales service?

A: Yes! Our product has professional after-sales service dept. Follow up R.M.A. Items service and upload product firmware and app for you download.

If you have any technical questions with the goods, please feel free to contact our technical support dept, or our sales directly.



Shenzhen Zhuohong Electronic Technology Co., Ltd.



13728899479



alice@zhuohongelectric.com



tft-displaylcd.com

Room 405, No. 1319-9, GuanGuang Road, XinLan Community, GuanLanStreet, LongHua District, 518110
ShenZhen China