

## 4.3 Inch 480x800 Touch TFT LCD Graphic Color Tft Screen Module 350nits NT35510 Driver IC

Our Product Introduction

for more products please visit us on [tft-displaylcd.com](http://tft-displaylcd.com)

### Basic Information

- Place of Origin: Guangdong, China
- Brand Name: oem
- Certification: ROHS
- Model Number: ZH043SWV008NB
- Minimum Order Quantity: 1pieces
- Price: Negotiated
- Packaging Details: Carton Packing
- Delivery Time: 7-15 working days
- Payment Terms: T/T, Western Union
- Supply Ability: 300k per month

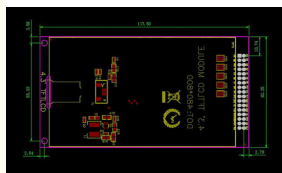
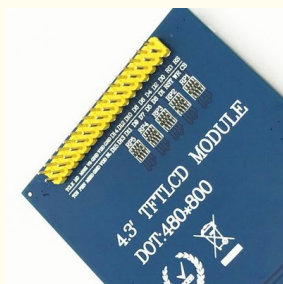


### Product Specification

- Type: TFT, LCD Panel
- Display Size: 4.3 Inch
- Size: 4.3"
- Viewing Angle: 350nits
- Resolution: 480x800
- Viewing Direction: 70/70/50/70
- Warranty: 1 Year
- Driver IC: NT35510
- Touch Panel: Capacitive Touch Screen
- Touch Driver IC: GT9147
- Touch Points: 5 Points
- Highlight: 480x800 touch tft lcd, touch tft lcd graphic, 480x800 touch tft display



### More Images



## Product Description

4.3 Inch 480x800 TFT LCD Graphic Color Module With NT35510 Driver IC

### Product Description

Part Number:	ZH043SWV008NB
Size:	4.3 inches
Resolution:	480x 3(RGB) x 800
Aspect ratio:	16:9
Module size:	61.56 x 104.65 x 2.1( with CTP 3.53)
Active area:	56.16x 93.6
Viewing angle:	70/70/50/70
Operating temperatures:	-20 to 70
Storage temperature:	-30 to 80
Brightness:	200cd/m2
Interface:	MCU/RGB
Driver IC:	NT35510
Touch Screen:	Capacitive touch screen
Driver board:	SD1963 controller board

### 4.3-Inch 480x800 TFT LCD Graphic Color Module with NT35510 Driver IC

**Overview:** This 4.3-inch TFT LCD module features a resolution of 480x800 pixels, providing vibrant and sharp images. It uses the NT35510 driver IC, which is known for its excellent performance in driving high-resolution displays. The module is suitable for a wide range of applications, including industrial control panels, consumer electronics, and embedded systems. The high pixel density combined with the TCC (Thin Chip Component) LCD technology ensures crisp visuals, making it ideal for detailed graphical interfaces and multimedia content.

#### Key Features:

Screen Size: 4.3 inches (diagonal)

Resolution: 480x800 pixels, offering high-definition graphics and images

Display Type: TFT (Thin Film Transistor) LCD for excellent color reproduction and contrast

Driver IC: NT35510, a popular driver for high-resolution TFT displays, providing stable performance and easy integration

Interface: MIPI, RGB, or parallel interface (compatible with most microcontrollers and processors)

Backlight: LED backlight with adjustable brightness levels for optimal visibility in various lighting conditions

Color Depth: 16.7 million colors (24-bit), ensuring vivid and true-to-life color representation

Aspect Ratio: 16:9 widescreen format, ideal for multimedia applications and modern UI layouts

Viewing Angle: Wide viewing angles of around 60-80° horizontally and vertically, depending on the panel

Brightness: Typically around 300-400 cd/m<sup>2</sup> for clear visibility in most environments

Touch Panel (Optional): Available with resistive or capacitive touch panel for interactive user interfaces

Operating Voltage: 3.3V or 5V, depending on the interface and system requirements

Operating Temperature: -20°C to 70°C, suitable for industrial, outdoor, and embedded applications

Dimensions: Compact and slim design, perfect for space-constrained devices

#### Applications:

Industrial control systems

Handheld devices and portable instruments

Automotive displays (navigation, infotainment, etc.)

Consumer electronics (e.g., media players, smart home interfaces)

Medical devices

Point-of-sale (POS) systems and kiosks

Home automation control panels

#### Advantages:

**NT35510 Driver IC:** Provides reliable performance and compatibility with various microcontrollers and processors, making it easy to integrate into different systems

**High Resolution:** 480x800 pixels ensure crisp and clear graphics, perfect for detailed images and text

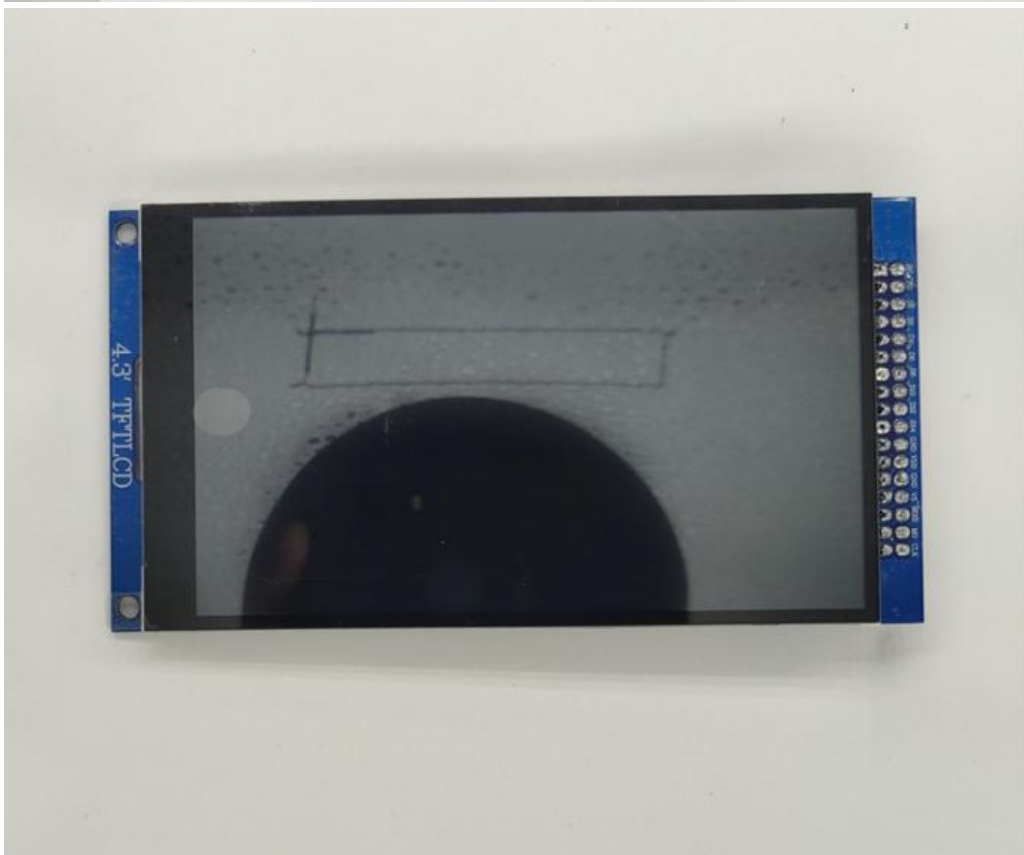
**Wide Interface Support:** Compatible with MIPI, RGB, or parallel interfaces for easy integration into various platforms

**Widescreen Format:** 16:9 aspect ratio offers a modern display format for multimedia and user interfaces

**Energy Efficient:** LED backlight provides good brightness with low power consumption, making it suitable for battery-powered devices

**Optional Touch Panel:** Available with capacitive or resistive touch options for interactive applications

This 4.3-inch TFT LCD module with NT35510 driver IC is ideal for applications that require a compact, high-quality display with excellent color reproduction and resolution. It's suitable for embedded projects, handheld devices, and industrial control panels that need clear and vibrant visual output.



Our Services

## Our Advantage

### why choose us



1. Replacement within 30 days after the shipment of products from us due to products' problems.
2. We can print your logo and stick your model No. on the cameras.
3. We have long cooperation with many shipping companies and our export volume is large. The shipping companies can offer us good discounts.
4. Professional technician supports. We have a good after-sales service team to solve your problems in time.
5. All goods will be inspected and tested before shipment.
6. Customer's satisfactory is most important to us. If you have any problem or questions regarding our transaction, please contact us by Trademanager or Email. It will be responded within 24 hours.

### Company Information

**ZhuoHong Electronic Technology** has been specializing in **TFT LCD display and touch screen** more than **10 years**. There are **90% of our business is custom made display modules for projects such as industrial devices, medical and smart home applications**. Our mission is to provide customer one-stop solution. With LCD display and touch screen as our product center, great trust is built with our customers.

## FACTORY SHOW



COG Automatic Plant



Bonding IC



Rubberizing



Sample production



Assembling



QC testing

### FAQ

**A Q:** When can i get the quotation?

**A:** We usually quote within 12 hours after we got your inquiry.

If it is very urgent, please call us or contact us via email, Skype or WhatsApp.

**Q:** What is your warranty?

**A:** We provide one year warranty.

Q: May i buy samples from you?

A: Yes! You are welcome to place sample order to test our superior quality and service.

Q: How to place bulk order?

A: 1) Tell us model number, quantity, color and other special requirements.

2) Proforma Invoice will be made and sent to you for approval

3) Production will be arranged once get your payment or deposit.

4) Goods will be delivered as stated on the Proforma Invoice.

Q: How will you deliver my goods to me?

A: We provide as many shipping options as possible, such as DHL, UPS, FEDEX, TNT AND EMS to enable our customers get their goods rapidly at door. We also ship by economical method such as air cargo and sea cargo, direct line, air mail according to customers' request.

Q: What about the quality of your product?

A: We provide unrivaled quality: very rigorous testing process for incoming quality control, input process quality control, and final quantity control for every piece. We follow QC test procedure, and do 100% FQC to ensure your satisfaction.

Q: Can you provide OEM service?

A: Yes! We can provide professional OEM service.

Q: What payment method do you accept?

A: T/T(bank transfer), L/C and paypal

Q: Do you have any after-sales service?

A: Yes! Our product has professional after-sales service dept. Follow up R.M.A. Items service and upload product firmware and app for you download.

If you have any technical questions with the goods, please feel free to contact our technical support dept, or our sales directly.



**Shenzhen Zhuohong Electronic Technology Co., Ltd.**



13728899479



alice@zhuohongelectric.com



tft-displaylcd.com

Room 405, No. 1319-9, GuanGuang Road, XinLan Community, GuanLanStreet, LongHua District, 518110  
ShenZhen China