

## 5.0 Inch TX13D100VM0EAA IPS TFT LCD Display Screen with 768\*1024 Resolution MiPi Interface

Our Product Introduction

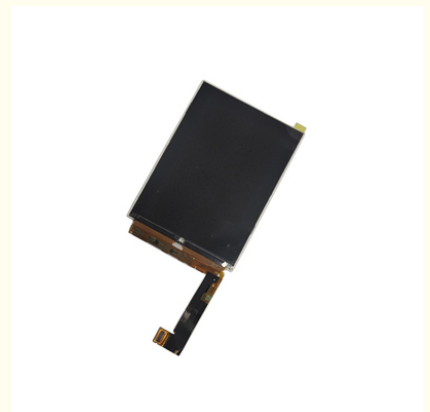
### Basic Information

- Place of Origin: Guangdong, China
- Brand Name: ZhuoHong/Oem
- Certification: ROHS
- Model Number: TX13D100VM0EAA
- Minimum Order Quantity: 1
- Price: Negotiated
- Packaging Details: All the products are packed in right way to keep it safe. For small sizes of products we use tray+ carton, for bigger sizes we use foam slot+carton. We also design packages according to customers' requirements.
- Delivery Time: 7-15 working days
- Payment Terms: T/T
- Supply Ability: 300k per month

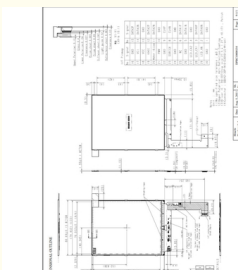


### Product Specification

- Type: IPS
- Display Size: 5.0 Inch
- Supplier Type: LCD Panel
- Display & LCD Type: 768\* RGB \*1024
- Viewing Direction: All O 'clock
- Interface Type: MIPI
- Touch Panel: Optional
- Outline Dimemsions (mm): 80.69\*110\*1.65 Mm
- Backlight Type: White LED
- PIN: 30
- Highlight: 5.0 inch lcd display screen,  
5.0 inch ips tft lcd display,  
rgb lcd display screen



### More Images



for more products please visit us on [tft-displaylcd.com](http://tft-displaylcd.com)

### Product Description

## Product Description

|                       |                     |
|-----------------------|---------------------|
| 1.Display Type:       | 5.0 inch TFT LCD    |
| 2.Display mode:       | Transmissive        |
| 3.Resolution:         | 5.0" 768*(RGB)*1024 |
| 4. Number of colors:  | 16.7M               |
| 5.Outline Dimensions: | 80.69X110X1.65 mm   |
| 6.Driver IC:          |                     |
| 7.Interface Type:     | MIPI                |
| Baclight:             |                     |
| 9.Operating voltage:  | +2.8V~3.3V          |
| 10.Viewing Angle:     | ALL O'clock         |
| 11.Operating Temp:    | -20°C~~+70°C        |
| 12.Storage Temp:      | -30°C~~+80°C        |







**LCD DOT DETAILS**

[illegible]

| I/F Pinmap |               | No. | Signal | No. | Signal |
|------------|---------------|-----|--------|-----|--------|
| 16         | GND           | 15  | DATA3P |     |        |
| 17         | VCI           | 14  | DATA3N |     |        |
| 18         | VCC           | 13  | GND    |     |        |
| 19         | IOWC          | 12  | DATA2P |     |        |
| 20         | Master IO_Low | 11  | DATA2N |     |        |
| 21         | PBM           | 10  | GND    |     |        |
| 22         | GND           | 9   | CLKP   |     |        |
| 23         | SOPRES        | 8   | CLKN   |     |        |
| 24         | GND           | 7   | GND    |     |        |
| 25         | NC            | 6   | DATA1P |     |        |
| 26         | GND           | 5   | DATA1N |     |        |
| 27         | LED_CA2       | 4   | GND    |     |        |
| 28         | LED_CA1       | 3   | DATA0P |     |        |
| 29         | LED_AN        | 2   | DATA0N |     |        |
| 30         | GND           | 1   | GND    |     |        |

Unit : mm  
( ) No specified size tolerance :  $\pm 0.2$ 

- (1) No specified size tolerance:  $\pm 0.2$   
 (2) Upper Polarizer: Anti Reflection Coating  
 (3) Lower IC: RG337 Chip size:  $27.5 \times 1.27$  mm Polish  
 (4) Connector: G042-3P-M10-13000 (15-Min)



1. Replacement within 30 days after the shipment of products from us due to products' problems.
2. We can print your logo and stick your model No. on the cameras.
3. We have long cooperation with many shipping companies and our export volume is large. The shipping companies can offer us good discounts.
4. Professional technician supports. We have a good after-sales service team to solve your problems in time.
5. All goods will be inspected and tested before shipment.
6. Customer's satisfactory is most important to us. If you have any problem or questions regarding our transaction, please contact us by Trademanager or Email. It will be responded within 24 hours.

## Company Profile

ZhuoHong Electronic Technology is a leading industry and trade integrated enterprise located in Shenzhen, China. With a monthly supply capacity of 300K pcs/month, ZhuoHong Electronic Technology is a trusted supplier of high-quality TFT LCD Modules & Touch screen to customers all over the world. As a one-stop liquid crystal display solution provider, ZhuoHong Electronic Technology supports OEM and ODM services, providing customers with customized display solutions to meet their unique needs. The company has its own TFT LCD manufacturing plant, R&D technical team, and sales team, ensuring the highest level of quality and service.

Customers can enjoy professional, one-on-one, 24-hour online customer service, as well as remote online technical support from engineers. ZhuoHong Electronic Technology's products come with a one-year warranty, providing customers with peace of mind and the confidence that they have made a reliable and long-lasting investment.

ZhuoHong Electronic Technology's advantages include factory direct selling prices, direct communication between engineers and customers, long-term and stable supply, and the ability to assist customers in formulating display solutions and solving problems.

In summary, ZhuoHong Electronic Technology is a trusted and reliable supplier of high-quality TFT LCD Modules, providing customers with customized solutions, exceptional service, and the highest level of quality and reliability.

## FACTORY SHOW



COG Automatic Plant



Bonding IC



Rubberizing



Sample production



Assembling



QC testing



**Shenzhen Zhuohong Electronic Technology Co., Ltd.**



13728899479



alice@zhuohongelectric.com



tft-displaylcd.com

Room 405, No. 1319-9, GuanGuang Road, XinLan Community, GuanLanStreet, LongHua District, 518110  
ShenZhen China