



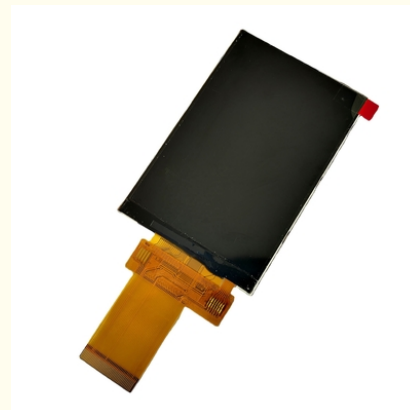
3.5" LCD Touch Screen Capacitive Touch Display 320x480 TFT LCD Panel with MCU Interface

Our Product Introduction

for more products please visit us on tft-displaylcd.com

Basic Information

- Place of Origin: Guangdong, China
- Brand Name: ZhuoHong/Oem
- Certification: ROHS
- Model Number: ZH350IT008V.C
- Minimum Order Quantity: 1
- Price: Negotiated
- Packaging Details: Carton Packing
- Delivery Time: 7-15 working days
- Payment Terms: T/T
- Supply Ability: 300k per month

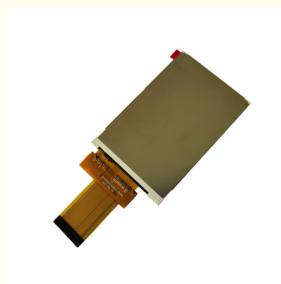


Product Specification

- Application: Industrial
- Interface: MCU, MCU/RGB
- Type: Capacitive, 3.5" Tft Lcd
- Drive IC: ILI9481/ILI9488/ST7796
- Module Size: 54.56 (H)*84.07 (V)*2.15cm
- Active Area: 49.44(H)*74.16 (V)cm
- Luminance: 300nits
- Contrast Ratio: 16:9
- Resolution: 320X480
- Viewing Angle: 12 O'Clock
- Warranty: 1 Year
- Driver IC: ILI9481/ILI9488/ST7796
- Highlight: 320x480 tft lcd panel,
320x480 small tft lcd display, mcu tft lcd panel



More Images



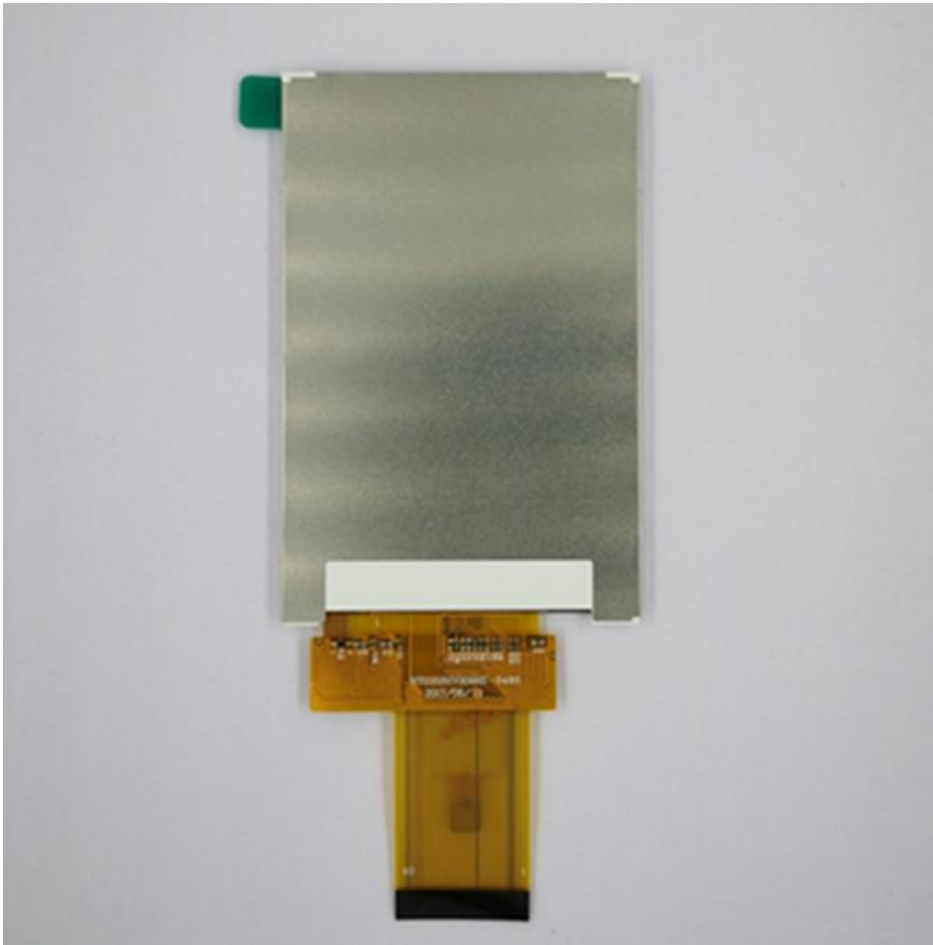
Product Description

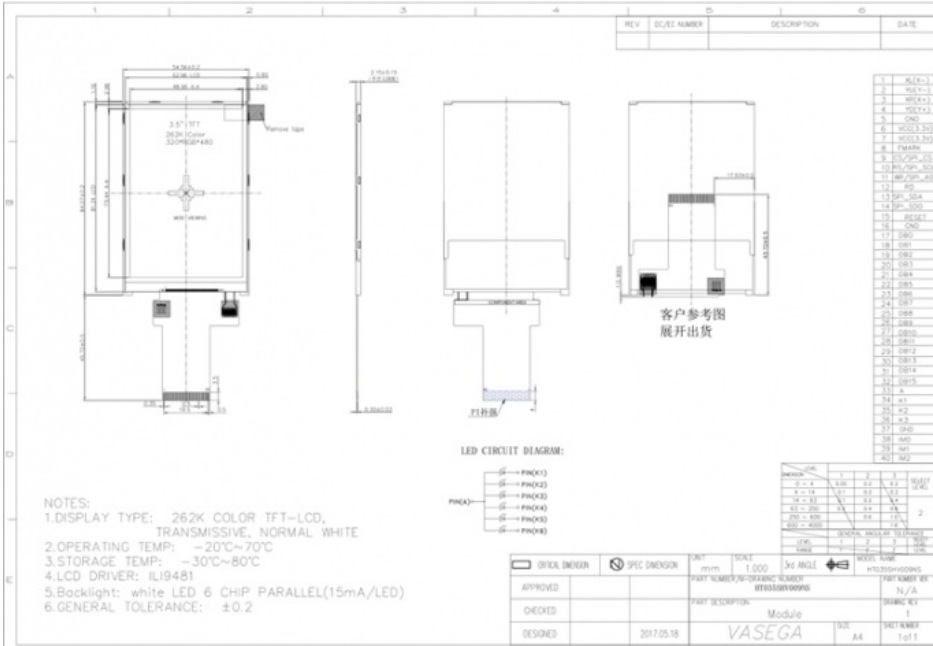
Product Description

3.5" LCD Touch Screen Capacitive Touch Display 320x480 TFT LCD Panel with MCU Interface

Part Number	ZH350IT008V.C
Size	3.5 inches
Resolution	320x 3(RGB) x 480
Aspect ratio	16:9
Module size	54.56*84.07*1.95
Active area	48.96 x 73.44
Viewing angle	70/70/50/70
Operating temperatures	-20 to 70
Storage temperature	-30 to 80
Brightness	300cd/m2
Interface	40pin MCU
Driver IC	ILI9488/S17796
Touch Screen	Capacitive touch screen
Driver IC	GT911

Pls feel free to ask for datasheet ofZH350IT008V.C!





Packaging & Shipping

SHIPMENT



7-10 working days
WWW.TNT.COM



5-7 working days
WWW.EMS.COM.CN



5-7 working days
WWW.DHL.COM



5-7 working days
WWW.UPS.COM



5-7 working days
WWW.FEDEX.COM



T/T

L/C

Our Services

Our Advantage

why choose us



1. Replacement within 30 days after the shipment of products from us due to products' problems.
2. We can print your logo and stick your model No. on the cameras.
3. We have long cooperation with many shipping companies and our export volume is large. The shipping companies can offer us good discounts.
4. Professional technician supports. We have a good after-sales service team to solve your problems in time.
5. All goods will be inspected and tested before shipment.
6. Customer's satisfactory is most important to us. If you have any problem or questions regarding our transaction, please contact us by Trademanager or Email. It will be responded within 24 hours.

Company Information

ZhuoHong Electronic Technology has been specializing in **TFT LCD display and touch screen** more than 10 years. There are **90% of our business is custom made display modules for projects such as industrial devices, medical and smart home applications**. Our mission is to provide customer one-stop solution. With LCD display and touch screen as our product center, great trust is built with our customers.

FACTORY SHOW



COG Automatic Plant



Bonding IC



Rubberizing



Sample production



Assembling



QC testing

Company Products Main Application



Industrial meter



BPG



POS machine



Washing machine



Thermometer



Calculator



Car speedometer



GPS tracker



Electric cooker



Hair curler



Fuel dispenser



Watch

Application: Industrial Control/ Home Automation / digital photo frame / Automotive display /portable DVD player / POS Machine, Car navigation, Robot, Medical device, Phone and so on;

FAQ

A Q: When can i get the quotation?

A: We usually quote within 12 hours after we got your inquiry.

If it is very urgent, please call us or contact us via email, Skype or WhatsApp.

Q: What is your warranty?

A: We provide one year warranty.

Q: May i buy samples from you?

A: Yes! You are welcome to place sample order to test our superior quality and service.

Q: How to place bulk order?

A: 1) Tell us model number, quantity, color and other special requirements.

2) Proforma Invoice will be made and sent to you for approval

3) Production will be arranged once get your payment or deposit.

4) Goods will be delivered as stated on the Proforma Invoice.

Q: How will you deliver my goods to me?

A: We provide as many shipping options as possible, such as DHL, UPS, FEDEX, TNT AND EMS to enable our customers get their goods rapidly at door. We also ship by economical method such as air cargo and sea cargo, direct line, air mail according to customers' request.

Q: What about the quality of your product?

A: We provide unrivaled quality: very rigorous testing process for incoming quality control, input process quality control, and final quantity control for every piece. We follow QC test procedure, and do 100% FQC to ensure your satisfaction.

Q: Can you provide OEM service?

A: Yes! We can provide professional OEM service.

Q: What payment method do you accept?

A: T/T(bank transfer), L/C and paypal

Q: Do you have any after-sales service?

A: Yes! Our product has professional after-sales service dept. Follow up R.M.A. Items service and upload product firmware and app for you download.

If you have any technical questions with the goods, please feel free to contact our technical support dept, or our sales directly.



Shenzhen Zhuohong Electronic Technology Co., Ltd.



13728899479



alice@zhuohongelectric.com



tft-displaylcd.com

Room 405, No. 1319-9, GuanGuang Road, XinLan Community, GuanLanStreet, LongHua District, 518110
ShenZhen China