

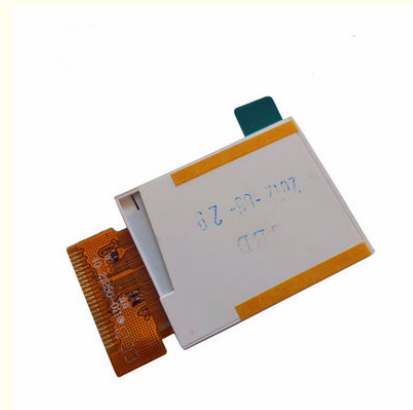
## 1.44 inch small lcd module display panel with led backlit tft screen without touch panel for smart watch

Our Product Introduction

for more products please visit us on [tft-displaylcd.com](http://tft-displaylcd.com)

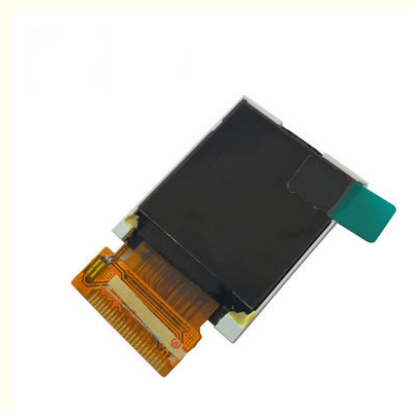
### Basic Information

- Place of Origin: Guangdong, China
- Brand Name: SHENCHAO
- Certification: ROHS
- Minimum Order Quantity: 1
- Price: Negotiated
- Packaging Details: Carton Packing
- Delivery Time: 7-15 working days
- Payment Terms: T/T, Western Union
- Supply Ability: 300k per month

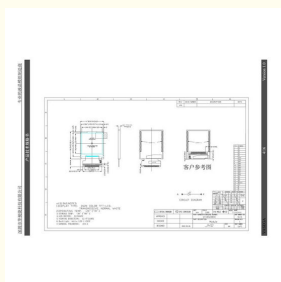


### Product Specification

- Type: TFT, LCD Panel
- Display Size: 1.44 Inch
- Size: 1.44"
- Color: White
- Viewing Angle: 180nits
- Interface: SPI
- Contrast Ratio: 500:1
- Resolution: 128x128
- Viewing Direction: 12 O' Clock
- Warranty: 1 Year
- Driver IC: ILI9163C
- Highlight: small tft lcd panel, smart tft lcd panel, smart small tft lcd display



### More Images

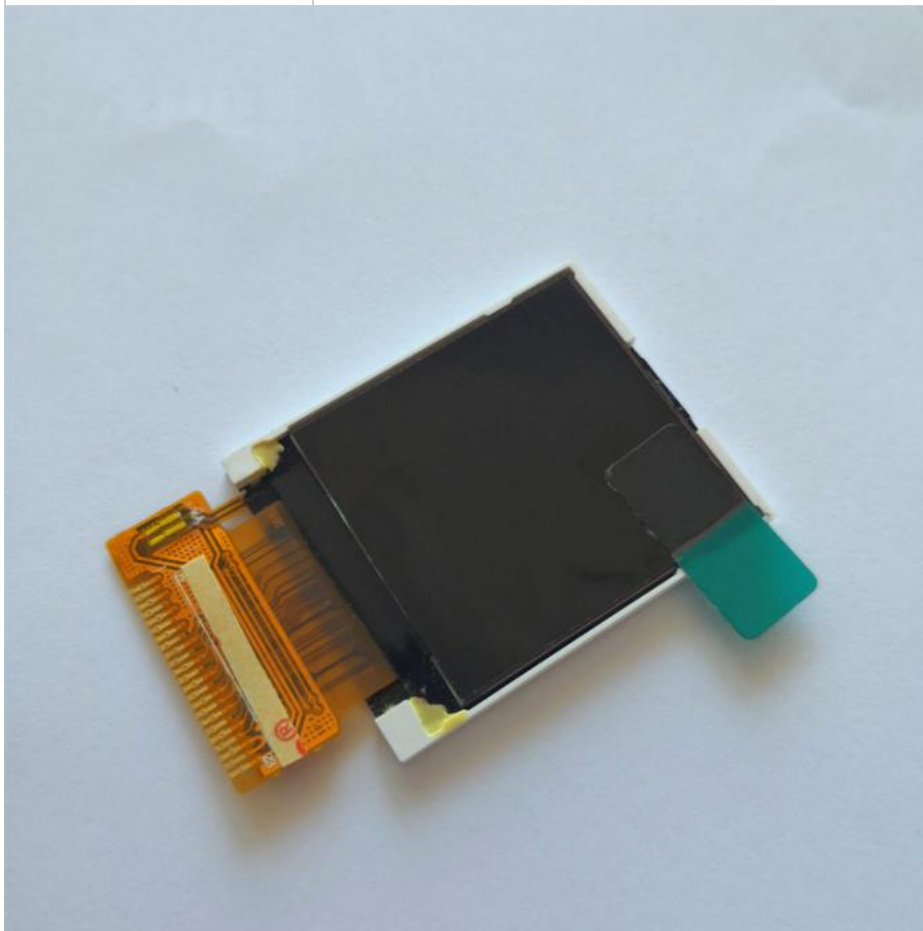


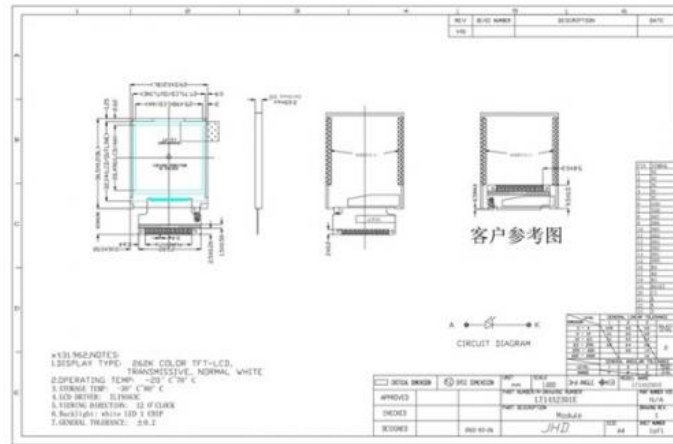
## Product Description

### Product Description

#### 1.44 inch small lcd module display panel with led backlit tft screen without touch panel for smart watch

Product Name	TFT , LCD Module
LCD type	1.44"TFT
Dot arrangement	128(RGB)×128
Color filter array	RGB vertical stripe
Display mode	TN / Transmission / Normally White
Eyes Viewing Direction	12 O'clock
Driver IC	ILI9163C
Module size	29.5(W)×36.5(H)×2.65(T)(Exclude FPC)
Active area	25.5(W)×26.5(H)
Interface	8080 8bit
Operating temperature	-20 ~ +70
Storage temperature	-30 ~ +80
Back Light	White LED*1
Brightness	180Cd/m2
Weight	TBD





## Packaging & Shipping

### SHIPMENT



7-10 working days  
WWW.TNT.COM



5-7 working days  
WWW.EMS.COM.CN



5-7 working days  
WWW.DHL.COM



5-7 working days  
WWW.UPS.COM



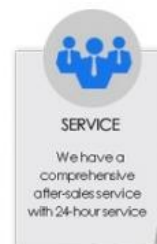
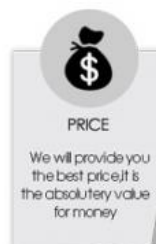
5-7 working days  
WWW.FEDEX.COM



## Our Services



### why choose us



1. Replacement within 30 days after the shipment of products from us due to products' problems.
2. We can print your logo and stick your model No. on the cameras.

3. We have long cooperation with many shipping companies and our export volume is large. The shipping companies can offer us good discounts.
4. Professional technician supports. We have a good after-sales service team to solve your problems in time.
5. All goods will be inspected and tested before shipment.
6. Customer's satisfactory is most important to us. If you have any problem or questions regarding our transaction. Please contact us by Trademanager or Email. It will be responded within 24 hours.

#### Company Information

**ZhuoHong Electronic Technology** has been specializing in **TFT LCD display and touch screen** more than 10years. There are **90% of our business is custom made display modules for projects such as industrial devices, medical and smart home applications**. Our mission is to provide customer one-stop solution. With LCD display and touch screen as our product center, great trust is built with our customers.





## Company Products Main Application



Industrial meter



BPG



POS machine



Washing machine



Thermometer



Calculator



Car speedometer



GPS tracker



Electric cooker



Hair curler



Fuel dispenser



Watch

## FACTORY SHOW



COG Automatic Plant



Bonding IC



Rubberizing



Sample production



Assembling



QC testing

## FAQ

Q: When can i get the quotation?

A: We usually quote within 12 hours after we got your inquiry.

If it is very urgent, please call us or contact us via email, Skype or WhatsApp.

Q: What is your warranty?

A: We provide one year warranty.

Q: May i buy samples from you?

A: Yes! You are welcome to place sample order to test our superior quality and service.

Q: How to place bulk order?

A: 1) Tell us model number, quantity, color and other special requirements.

2) Proforma Invoice will be made and sent to you for approval

3) Production will be arranged once get your payment or deposit.

4) Goods will be delivered as stated on the Proforma Invoice.

Q: How will you deliver my goods to me?

A: We provide as many shipping options as possible, such as DHL, UPS, FEDEX, TNT AND EMS to enable our customers get their goods rapidly at door. We also ship by economical method such as air cargo and sea cargo, direct line, air mail according to customers' request.

Q: What about the quality of your product?

A: We provide unrivaled quality: very rigorous testing process for incoming quality control, input process quality control, and final quantity control for every piece. We follow QC test procedure, and do 100% FQC to ensure your satisfaction.

Q: Can you provide OEM service?

A: Yes! We can provide professional OEM service.

Q: What payment method do you accept?

A: T/T(bank transfer), L/C and paypal

Q: Do you have any after-sales service?

A: Yes! Our product has professional after-sales service dept. Follow up R.M.A. Items service and upload product firmware and app for you download.

If you have any technical questions with the goods, please feel free to contact our technical support dept, or our sales directly.



**Shenzhen Zhuohong Electronic Technology Co., Ltd.**



13728899479



alice@zhuohongelectric.com



tft-displaylcd.com

Room 405, No. 1319-9, GuanGuang Road, XinLan Community, GuanLanStreet, LongHua District, 518110  
ShenZhen China